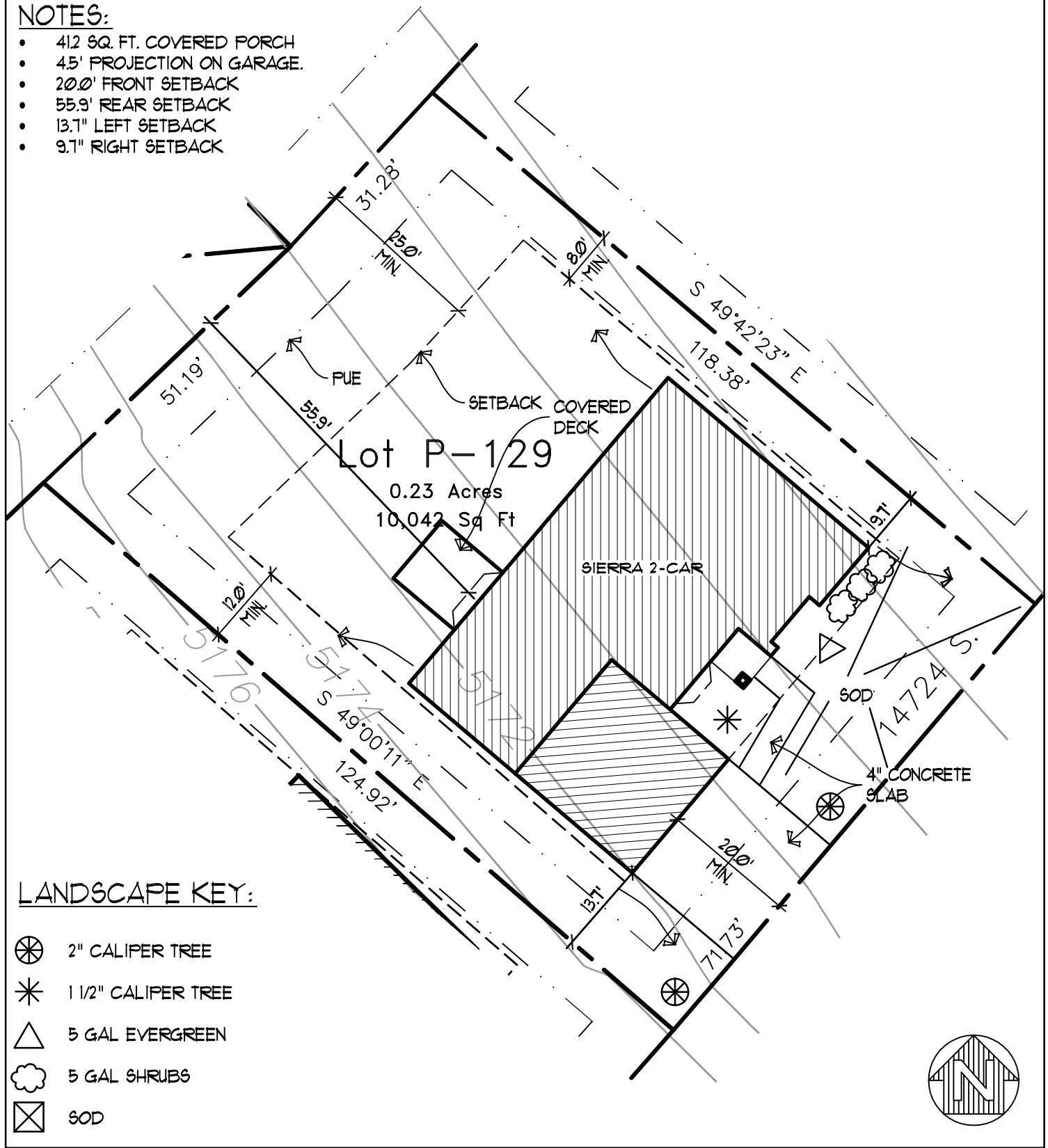


**NOTES:**

- 412 SQ. FT. COVERED PORCH
- 4.5' PROJECTION ON GARAGE.
- 20.0' FRONT SETBACK
- 55.9' REAR SETBACK
- 13.7' LEFT SETBACK
- 9.7' RIGHT SETBACK



**LANDSCAPE KEY:**

- 2" CALIPER TREE
- 1 1/2" CALIPER TREE
- 5 GAL EVERGREEN
- 5 GAL SHRUBS
- SOD

PLAN <b>SIERRA 2 CAR</b>	DATE 12/8/2006
ADDRESS 14724 SOUTH EVENING SIDE DRIVE HERRIMAN, UTAH 84065	SCALE 1" = 20'-0"
SUBDIVISION <b>ROSECREST</b>	SQUARE FEET 10,042
	ACREAGE 0.23
	PHASE P
	LOT NUMBER 129

**WASATCH HOMES**

P.O. Box 490  
Riverton, Utah 84065

Site plan provided for informational purposes only. Actual dimensions may vary. Builder reserves right to make changes for reasons including but not limited to site conditions, municipal requirements, house options, changes to house design, building setback & utility easements.  
© COPYRIGHT, WASATCH HOMES All Rights Reserved, the use of these plans is expressly limited to Wasatch Homes.